



The Rippon 894 sq ft

3 bedroom semi-detached and detached homes
PLOTS 4, 5, 6, 7, 8, 9, 14, 17, 18, 21, 28 & 29

This stylish home features a large living/dining area with French doors giving access to the rear garden. Downstairs is also a separate kitchen plus a cloakroom and storage cupboard. The first floor is home to the master bedroom with en-suite, two further bedrooms and the family bathroom.

Dimensions:

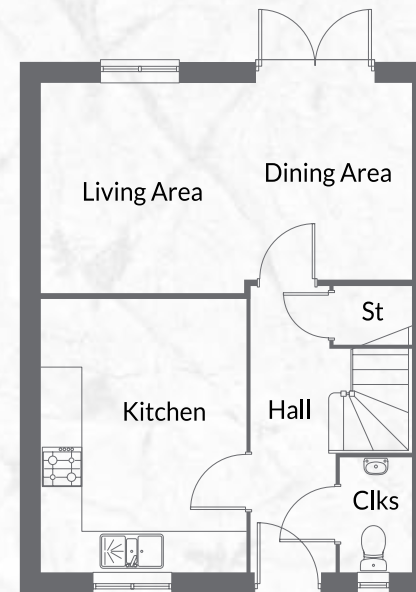
GROUND FLOOR

Kitchen 4.11m x 3.09m (13' 6" x 10' 2")	Living/ Dining Area 5.61m x 3.16m (18' 5" x 10' 5")
--	--

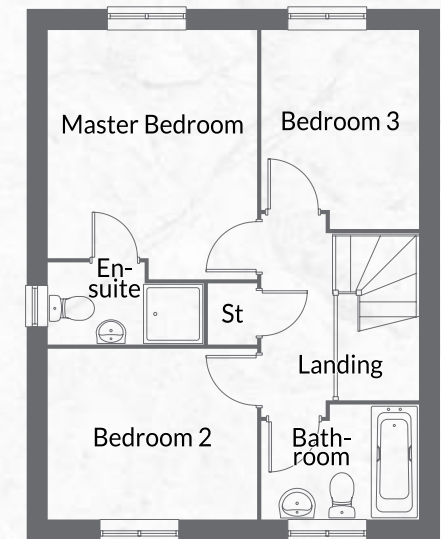
* maximum † minimum

FIRST FLOOR

Master Bedroom 3.43m† x 3.15m (11' 3"† x 10' 4")	Bedroom 2 3.15m x 2.56m (10' 4" x 8' 5")	Bedroom 3 2.99m* x 2.37m (9' 10"* x 7' 9")
---	---	---



GROUND FLOOR



FIRST FLOOR