



## The Cranmere 708 sq ft

2 bedroom semi-detached home

PLOTS 15, 16, 24, 25, 26, 27, 33, 34 & 35

A contemporary semi-detached home, the ground floor has a living/dining area featuring French doors leading to the garden, a separate kitchen plus a cloakroom and storage cupboard. Upstairs features the master bedroom with en-suite along with a further bedroom and the family bathroom.

### Dimensions:

#### GROUND FLOOR

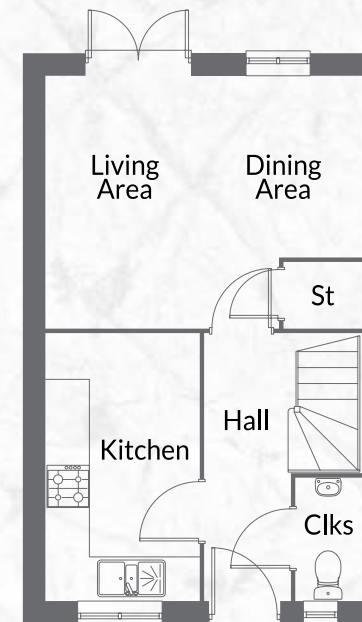
<b>Kitchen</b>	<b>Living/ Dining Area</b>
3.76m x 2.15m	4.44m x 3.55m*
(12' 4" x 7' 1")	(14' 7" x 11' 8"*)

\* maximum

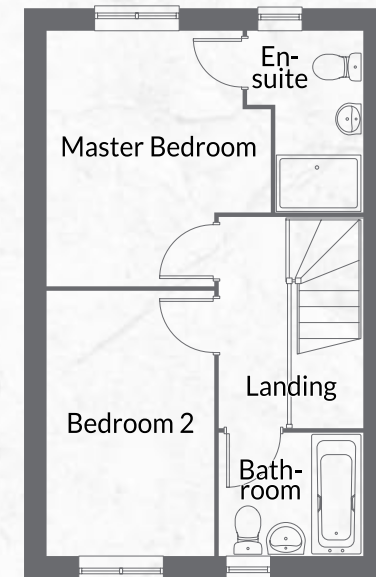
#### FIRST FLOOR

<b>Master Bedroom</b>	<b>Bedroom 2</b>
3.59m x 3.14m*	3.72m x 2.34m
(11' 9" x 10' 4"*)	(12' 3" x 7' 8"*)

\* maximum



GROUND FLOOR



FIRST FLOOR