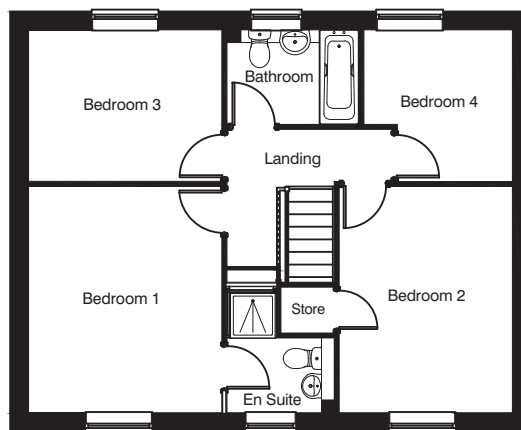
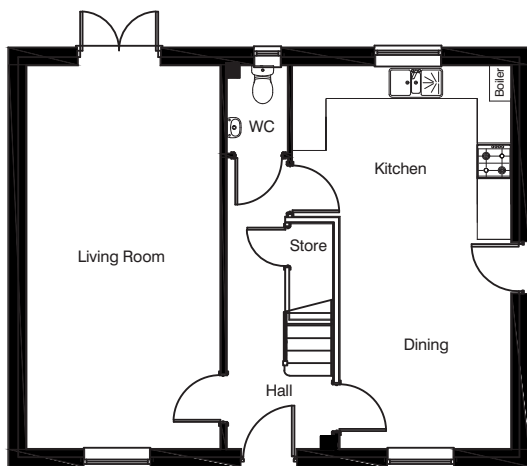


# The Winsford

Four bedroom house



All house type images are for illustrative purposes only and the final building detailing and finishes may vary from what is shown. Please see our sales advisors for full site specific details.



## Ground floor

Living Room 3.45m x 6.87m  
11'4" x 22'6"

Kitchen/Dining 3.91m (max) x 6.87m  
3.05m (min) x 22'6"  
12'9" (min) x 22'6"  
10'0" (min)

WC 1.60m x 1.11m  
5'3" x 3'7"

## First floor

Bedroom 1 3.45m x 4.05m  
11'4" x 13'3"

En Suite 2.20m x 1.95m  
7'2" x 6'4"

Bedroom 2 3.09m x 4.05m  
10'2" x 13'3"

Bedroom 3 3.45m x 2.71m  
11'4" x 8'11"

Bedroom 4 2.65m x 2.71m  
8'8" x 8'11"

Bathroom 2.39m x 1.73m  
7'10" x 5'8"

1298 sq ft

All measurements shown are approximate maximum room dimensions.

Depending on plot number, the floor plans for this house type may be opposite to those shown above.

**CONSUMER  
CODE FOR  
HOME BUILDERS**

[www.consumercode.co.uk](http://www.consumercode.co.uk)

Every care has been taken to ensure the accuracy of these particulars but the contents shall not form part of any contract and the vendors reserve the right to alter specification and/or design without notice. Landscaping shown is for illustration purposes only.

**LarkfleetHomes**  
— South West —

[www.larkfleethomes-sw.co.uk](http://www.larkfleethomes-sw.co.uk)