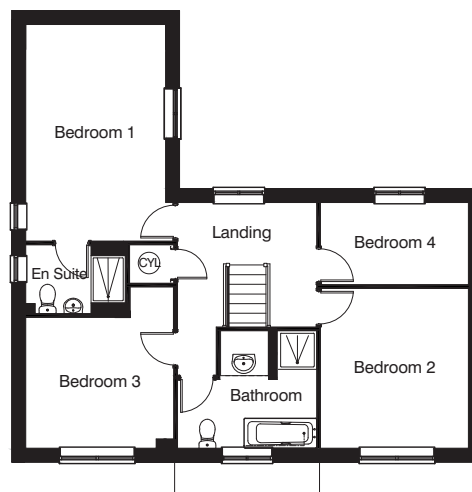
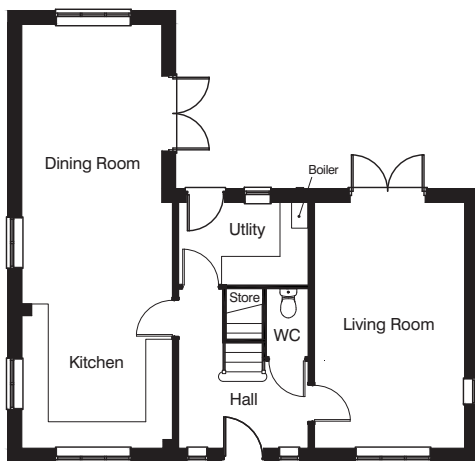


# The Lynton

Four bedroom house



All house type images are for illustrative purposes only and the final building detailing and finishes may vary from what is shown. Please see our sales advisors for full site specific details.



## Ground floor

Living Room	3.54m x 5.75m	11'7" x 18'10"
Kitchen/Dining Room	3.27m x 9.92m	10'9" x 32'6"
Utility Room	3.28m x 1.92m	10'9" x 6'3"
WC	1.62m x 1.00m	5'3" x 3'3"

## First floor

Bedroom 1	3.27m x 5.05m	10'9" x 16'7"
En Suite	2.39m x 1.60m	7'10" x 5'3"
Bedroom 2	3.45m x 3.73m	11'4" x 12'3"
Bedroom 3	3.45m x 3.05m	11'4" x 10'0"
Bedroom 4	3.45m x 1.91m	11'4" x 6'3"
Bathroom	3.25m x 2.78m	10'8" x 9'1"

1595 sq ft

All measurements shown are approximate maximum room dimensions.

Depending on plot number, the floor plans for this house type may be opposite to those shown above.

**CONSUMER  
CODE FOR  
HOME BUILDERS**

[www.consumercode.co.uk](http://www.consumercode.co.uk)

Every care has been taken to ensure the accuracy of these particulars but the contents shall not form part of any contract and the vendors reserve the right to alter specification and/or design without notice. Landscaping shown is for illustration purposes only.

**LarkfleetHomes**  
— South West —

[www.larkfleethomes-sw.co.uk](http://www.larkfleethomes-sw.co.uk)