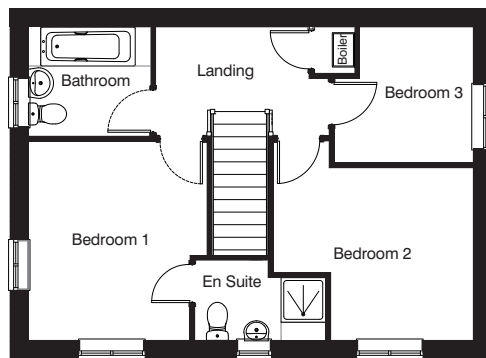
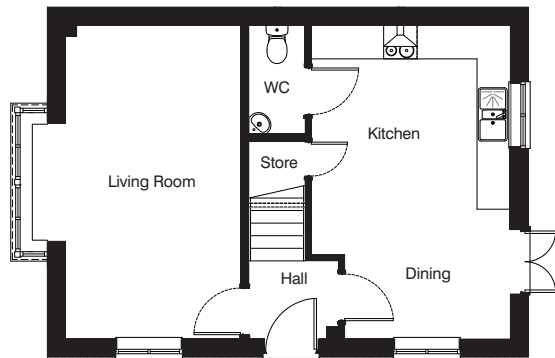


The Brendon

Three bedroom house



All house type images are for illustrative purposes only and the final building detailing and finishes may vary from what is shown. Please see our sales advisors for full site specific details.



Ground floor

Living Room	3.15m x 5.64m 10'4" x 18'6"
Kitchen/Dining Room	3.58m x 5.64m 11'9" x 18'6"
WC	2.01m x 1.04m 6'7" x 3'4"

First floor

Bedroom 1	3.20m x 3.57m 10'6" x 11'9"
En Suite	2.37m x 1.47m 7'9" x 4'9"
Bedroom 2	3.59m x 3.09m 11'9" x 10'2"
Bedroom 3	2.49m x 2.43m 8'2" x 8'0"
Bathroom	2.23m x 2.00m 7'3" x 6'6"

984 sq ft

All measurements shown are approximate maximum room dimensions.

Depending on plot number, the floor plans for this house type may be opposite to those shown above.

**CONSUMER
CODE FOR
HOME BUILDERS**

www.consumercode.co.uk

Every care has been taken to ensure the accuracy of these particulars but the contents shall not form part of any contract and the vendors reserve the right to alter specification and/or design without notice. Landscaping shown is for illustration purposes only.

LarkfleetHomes
— South West —

www.larkfleethomes-sw.co.uk