



## The Brendon 1,781 sq ft

4 bedroom detached home

PLOT 4

This individual family home offers a large living room with wood burner and French doors to the rear garden, superb kitchen with dining area, study and utility. Upstairs features the master bedroom with dressing room and an en-suite along with three further bedrooms and the family bathroom.

### GROUND FLOOR

**Kitchen/Dining Area**  
6.21m\* x 5.52m\*  
(20' 5" x 18' 2")

**Study**  
2.72m\* x 2.44m\*  
(8' 11" x 8' 0")

**Living Room**  
5.52m\* x 5.35m\*  
(18' 2" x 17' 7")

### FIRST FLOOR

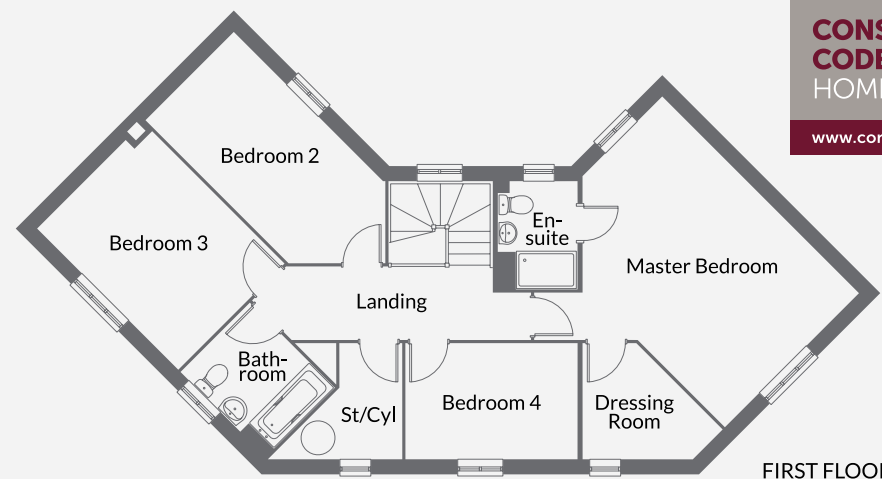
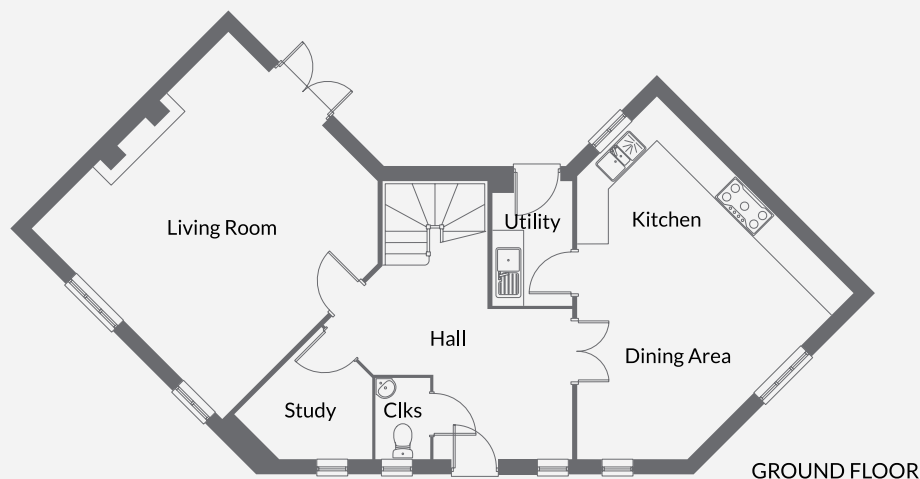
**Master Bedroom**  
5.52m\* x 3.76m\*  
(18' 2" x 12' 4")

**Bedroom 3**  
3.96m x 2.97m  
(13' 0" x 9' 9")

**Bedroom 2**  
5.37m\* x 2.46m  
(17' 7" x 8' 1")

**Bedroom 4**  
3.41m x 2.29m  
(11' 2" x 7' 6")

\* maximum



**CONSUMER  
CODE FOR  
HOME BUILDERS**

[www.consumercode.co.uk](http://www.consumercode.co.uk)