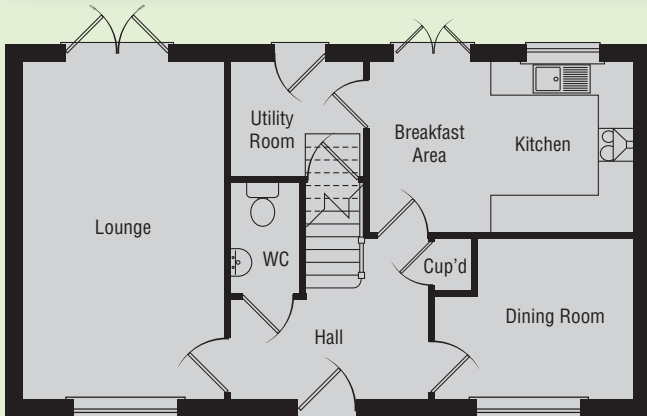


# The Sandown 4 Bedroom home

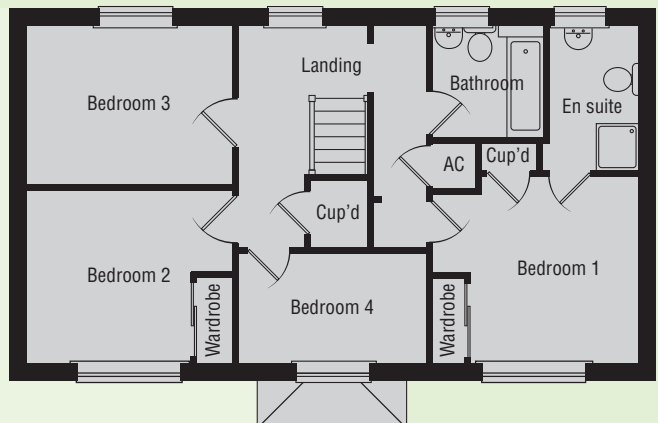


## GROUND FLOOR

Lounge	3.54m x 5.82m
	11' 7" x 19' 1"
Dining Room	3.42m* x 2.75m*
	11' 2" x 9' 0"
Kitchen/ Breakfast area	4.56m x 2.91m
	14' 11" x 9' 6"
Utility Room	2.24m x 1.97m
	7' 4" x 6' 5"

## FIRST FLOOR

Bedroom 1	3.62m* x 3.25m*
	11' 10" x 10' 7"
En suite	1.69m x 2.48m
	5' 6" x 8' 1"
Bedroom 2	3.54m* x 2.87m*
	11' 7" x 9' 5"
Bedroom 3	3.54m x 2.76m
	11' 7" x 9' 1"
Bedroom 4	3.24m x 1.90m
	10' 6" x 6' 2"
Bathroom	1.96m x 1.91m
	6' 5" x 6' 3"



Every care has been taken to ensure the accuracy of these floor plans and dimensions but the contents shall not form any part of any contract and the vendors reserve the right to alter specification and/or design without prior notice. Purchasers are advised to check individual plot details with the Sales Advisers.

\*Maximum dimensions